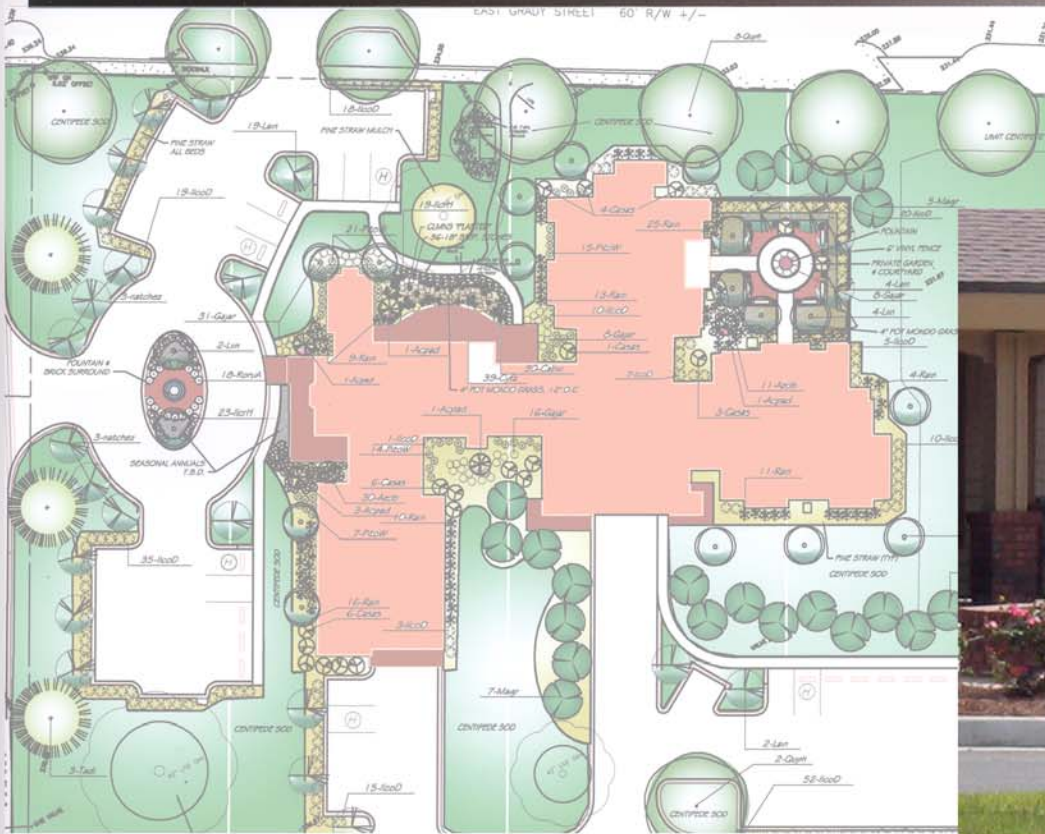


No Fee Category Award



Project Name and Location:
Hospice Care Facility
Statesboro, Georgia

Company:
Chuck Taylor

Client:
Ogeechee Area Hospice

Project Purpose: Provide landscape and site design for a new hospice facility. Prepare a site design that would preserve existing significant trees, reflect the heritage of the community, create private and public spaces and project an overall residential feel. Most importantly, the design would need to serve as a communication tool to inspire donations. There was no funding set aside for landscaping in the project.

Special Factors: Statesboro is a rural community in southeast Georgia, population under 40,000. The new hospice facility is to be constructed near the center of town on a previous old hospital site. The hospital was unsuitable for renovation and had been demolished by the city. However, several significant trees, including several Live Oaks were preserved, and sections of old Doric columns were saved under the guidance of the landscape architect.

Role of the Landscape Architect: The landscape architect not only provided the lead in the design of the site hardscape, landscape and irrigation, but also coordinated bidding efforts and provided construction observations services, all pro bono. In addition, the landscape architect donated an antique kettle to aid in the implementation of the fountain design. The landscape architect prepared rendered concepts, budget proposals, and construction documents and worked with the contractor to determine the most cost effective ways to implement the design. Most significantly, the landscape architect meet with a potential donor and secured 100% funding for the project.

Significance: Many visitors have expressed an appreciation of the sugar kettle fountain as a representation of the history of farm life in the region. Column sections preserved from the old hospital were incorporated into a "ruin garden" as part of the landscape design and a brass plaque identifies their significance.

